

What Do I Need?

- A wireless-enabled laptop/other device compatible with Wi-Fi (802.11b or 802.11g wireless standard).
- A fully charged battery. For safety reasons, we cannot allow electrical cords to stretch across the floor.
- JCPL's wireless networks are open to all visitors and do not require logins, passwords, or a library card.
- Since laptops and other personal devices are all a little different, you should know how to change settings for your unique device.

Use Policy:

- Wireless use at JCPL is subject to the same terms and restrictions as use of the library's wired computers. If you have any questions, please ask at the desk.
- Internet access is unrestricted; however, our internet use policy applies.



***For your own protection, please do not leave your equipment unattended.**



Jasper County Public Library

Rensselaer Library
208 W Susan St.
Rensselaer, IN 47978
(219)866-5881

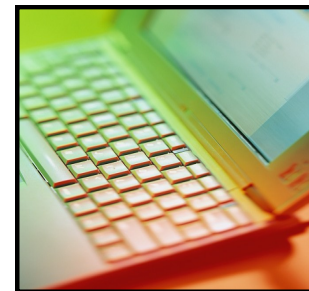
DeMotte Library
901 Birch St., SW
DeMotte, IN 46310
(219)987-2221

Wheatfield Library
350 S Bierma St.
Wheatfield, IN 46392
(219)956-3774

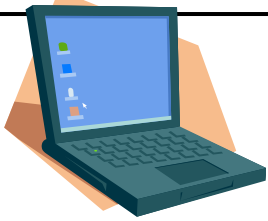
**JASPER COUNTY PUBLIC
LIBRARY**

Wireless Printing @ JCPL

*Experience the convenience
of Wi-Fi at JCPL*



Go Wireless!



JCPL Now Offers Wireless Printing at all Three Libraries!



Printer information for each JCPL library:

• Demotte:

Printer make/model: HP LaserJet P2015dn

IP Address: 192.168.1.150

* Duplex available

• Rensselaer:

Printer make/model: HP LaserJet P2015dn

IP Address: 192.168.1.150

* Duplex available

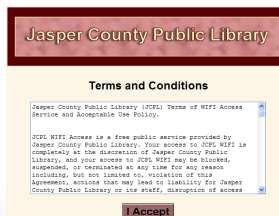
• Wheatfield:

Printer make/model: HP LaserJet 1320n

IP Address: 192.168.1.233

How do I get started?

- Establish a connection to the JCPL Wireless network
- Open a browser window.
- Read the Terms and Conditions. If you agree to them, then click I Accept.



- Close the Browser Window

How do I install the printer on my laptop?

- If you have Windows XP/Vista, for easy installation you may download the automated printer driver installer from our website:
http://www.jasperco.lib.in.us/main/wireless_printing.htm

Please Note: You must have administrative privileges to run the automated installer.

OR

- If you do not want or are unable to download the automated installer:
 - Download the correct printer drivers for your location and OS:
 - You may download the drivers from HP's website at <http://www.hp.com>
 - OR, for your convenience, we have added a link to the appropriate drivers on our website:
http://www.jasperco.lib.in.us/main/wireless_printing.htm

- Extract the drivers to a temporary location.
- Open the Printers and Faxes folder and run the Add Printer wizard. Select Local Printer and uncheck *Automatically Detect and Install...*
- Create a new port, Type of Port is *Standard TCP/IP*.
- Use the IP address that corresponds to your location, accept the default name. If prompted, use *Generic Network Card*.
- When prompted for a driver for the printer click Have Disk and browse to the location of the extracted files.
- Select the driver listed and finish the installation.

Please Note: MAC OS X has a built in wizard for adding printers. Run the Print and Fax application. Select HP Jet Direct Socket.

What is duplex printing?

- Duplex printing is the capability of printing on both sides of the paper.

Duplex printing information

- Available only at Demotte and Rensselaer
- Note: When you are ready to print, if you click on the printer picture, it will automatically print to the default printer with the default options (i.e. if you have not set the default to print duplex, it will print single-sided).
- Note: When installing the printer, if you do not install the correct drivers, you will not have duplex printing available as an option.

How do I print duplex (two-sided) documents?

- Click File / Print. Select the Library's wireless printer from the list.
- Click Preferences (or Properties, depending on your OS and application) and the Printing Preference/Properties dialog box appears.
- Set the option to print on both sides of the page.